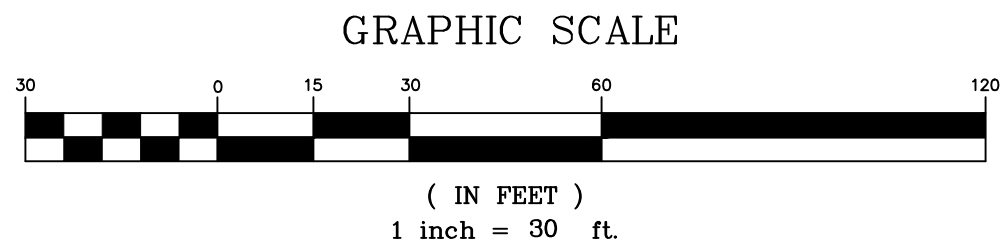
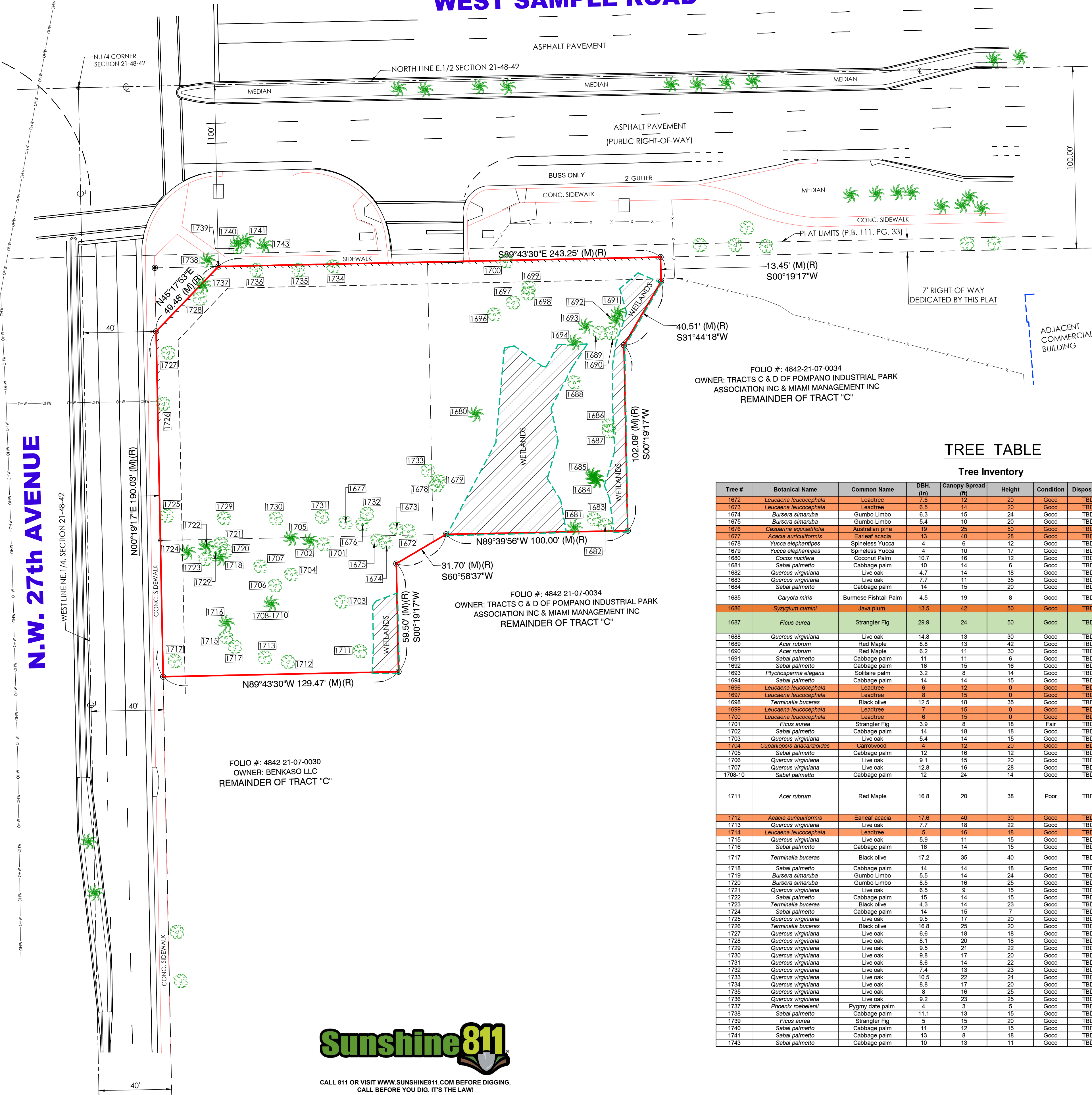


SKETCH OF BOUNDARY SURVEY
TOPOGRAPHIC SURVEY



WEST SAMPLE ROAD



LEGEND

(C) = Calculated
CL = Clear
CL = Center Line
CONC. = Concrete
CBS. = Concrete Block Stucco
Δ = Delta
ENC. = Encroachment
F.F.E.L. = Finish Floor Elevation
F.I.P. = Found Iron Pipe
F.I.R. = Found Iron Rod
F.N. = Found Nail
F.N&D. = Found Nail & Disc
F.D.H. = Found Drill Hole
I.D. = Identification
L = Length
M = Monument Line
(M) = Measured
O/L = On Line
P = Property Line
(P) = Plat
P.C. = Point of Curvature
P.B. = Plat Book
P.G. = Page
P.O.B. = Point of Beginning
P.O.C. = Point of Commence
R = Radius
(R) = Record
R/W = Right of Way
U.E. = Utility Easement

SYMBOLS

CABLE TV
CATCH BASIN
WATER METER
CONCRETE POLE
WOOD POLE
LIGHT POLE
SANITARY MANHOLE
DRAINAGE MANHOLE
ELECTRIC BOX
WATER VALVE
FIRE HYDRANT
FLOW TRAFFIC
PEDESTRIAN SIGNAL
SIGN
GAS WARNING
PEDESTRIAN SIGNAL
ANCHOR
EXISTING ELEVATION
PALM
TREE
CHAIN LINK FENCE (C.L.F.)
CBS. WALL

TREE TABLE

Tree Inventory

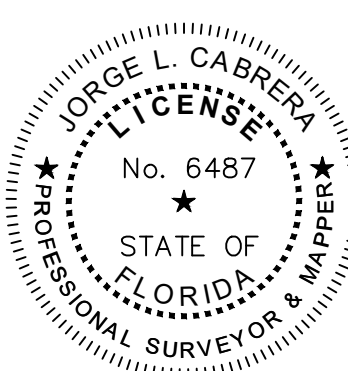
Tree #	Botanical Name	Common Name	DBH. (in)	Canopy Spread (ft)	Height (ft)	Condition	Disposition	Tree Type	Note
1672	Leucaena leucocephala	Leadtree	7.5	12	20	Good	TBD	Exempt	
1673	Leucaena leucocephala	Leadtree	6.5	14	20	Good	TBD	Exempt	
1674	Bursera simaruba	Gumbo Limbo	6.3	15	24	Good	TBD	Non-Specimen	
1675	Bursera simaruba	Gumbo Limbo	5.4	10	20	Good	TBD	Non-Specimen	
1676	Casuarina equisetifolia	Australian pine	19	25	50	Good	TBD	Exempt	
1677	Acacia auriculiformis	Earleaf acacia	13	40	28	Good	TBD	Exempt	
1678	Yucca elephantipes	Spineless Yucca	4	6	12	Good	TBD	Non-Specimen	
1679	Yucca elephantipes	Spineless Yucca	4	10	17	Good	TBD	Non-Specimen	
1680	Cocos nucifera	Coconut Palm	10.7	16	12	Good	TBD	Non-Specimen	
1681	Sabal palmetto	Cabbage palm	10	14	6	Good	TBD	Non-Specimen	
1682	Quercus virginiana	Live oak	4.3	14	18	Good	TBD	Non-Specimen	
1683	Quercus virginiana	Live oak	7.7	11	35	Good	TBD	Non-Specimen	
1684	Sabal palmetto	Cabbage palm	14	15	20	Good	TBD	Non-Specimen	
1685	Caryota mitis	Burmese Fishtail Palm	4.5	19	8	Good	TBD	Non-Specimen	10 stems; 4.5 is largest DBH. Mostly smaller.
1686	Syzygium cumini	Java plum	13.5	42	50	Good	TBD	Exempt	
1687	Ficus aurea	Strangler Fig	29.9	24	50	Good	TBD	Specimen	Partially growing on 1687, being shaded somewhat. Good health and form.
1688	Quercus virginiana	Live oak	14.8	13	30	Good	TBD	Non-Specimen	
1689	Acer rubrum	Red Maple	8.5	13	42	Good	TBD	Non-Specimen	
1690	Acer rubrum	Red Maple	6.2	11	30	Good	TBD	Non-Specimen	
1691	Sabal palmetto	Cabbage palm	11	11	6	Good	TBD	Non-Specimen	
1692	Sabal palmetto	Cabbage palm	16	15	16	Good	TBD	Non-Specimen	
1693	Pythosperma elegans	Solitaire palm	3.2	8	14	Good	TBD	Non-Specimen	
1694	Sabal palmetto	Cabbage palm	14	14	15	Good	TBD	Non-Specimen	
1695	Leucaena leucocephala	Leadtree	6	12	0	Good	TBD	Exempt	
1696	Leucaena leucocephala	Leadtree	8	15	0	Good	TBD	Exempt	
1698	Terminalia buceras	Black olive	12.5	18	35	Good	TBD	Non-Specimen	
1699	Leucaena leucocephala	Leadtree	7	15	0	Good	TBD	Exempt	
1700	Leucaena leucocephala	Leadtree	6	15	0	Good	TBD	Exempt	
1701	Ficus aurea	Strangler Fig	3.9	8	18	Fair	TBD	Non-Specimen	
1702	Sabal palmetto	Cabbage palm	14	18	18	Good	TBD	Non-Specimen	
1703	Quercus virginiana	Live oak	5.4	14	15	Good	TBD	Non-Specimen	
1704	Cupressus arborescens	Carobwood	4	12	20	Good	TBD	Exempt	
1705	Sabal palmetto	Cabbage palm	12	16	12	Good	TBD	Non-Specimen	
1706	Quercus virginiana	Live oak	9.1	15	20	Good	TBD	Non-Specimen	
1707	Quercus virginiana	Live oak	12.8	16	28	Good	TBD	Non-Specimen	
1708-10	Sabal palmetto	Cabbage palm	12	24	14	Good	TBD	Non-Specimen	Three trees, combined canopy. Additional stems: 6.1, 9.1, 10, 6.0. Extensive trunk rot, conks, extensive dieback in canopy, canopy sparse, smothered by Syzygium.
1711	Acer rubrum	Red Maple	16.8	20	38	Poor	TBD	Non-Specimen	
1712	Acacia auriculiformis	Earleaf acacia	17.6	40	30	Good	TBD	Exempt	
1713	Quercus virginiana	Live oak	7.7	18	22	Good	TBD	Non-Specimen	
1714	Leucaena leucocephala	Leadtree	5	16	18	Good	TBD	Exempt	
1715	Quercus virginiana	Live oak	5.8	11	15	Good	TBD	Non-Specimen	
1716	Sabal palmetto	Cabbage palm	18	14	15	Good	TBD	Non-Specimen	
1717	Terminalia buceras	Black olive	17.2	35	40	Good	TBD	Non-Specimen	Measured above DBH due to bulge.
1718	Sabal palmetto	Cabbage palm	14	14	18	Good	TBD	Non-Specimen	
1719	Bursera simaruba	Gumbo Limbo	5.5	14	24	Good	TBD	Non-Specimen	
1720	Bursera simaruba	Gumbo Limbo	8.5	16	25	Good	TBD	Non-Specimen	
1721	Quercus virginiana	Live oak	9	15	15	Good	TBD	Non-Specimen	
1722	Sabal palmetto	Cabbage palm	15	14	15	Good	TBD	Non-Specimen	
1723	Terminalia buceras	Black olive	4.3	14	23	Good	TBD	Non-Specimen	
1724	Sabal palmetto	Cabbage palm	14	15	7	Good	TBD	Non-Specimen	
1725	Quercus virginiana	Live oak	9.5	17	20	Good	TBD	Non-Specimen	
1726	Terminalia buceras	Black olive	16.8	25	20	Good	TBD	Non-Specimen	
1727	Quercus virginiana	Live oak	6.6	18	18	Good	TBD	Non-Specimen	
1728	Quercus virginiana	Live oak	8.1	20	18	Good	TBD	Non-Specimen	
1729	Quercus virginiana	Live oak	9.5	21	22	Good	TBD	Non-Specimen	
1730	Quercus virginiana	Live oak	9.8	17	20	Good	TBD	Non-Specimen	
1731	Quercus virginiana	Live oak	8.6	14	22	Good	TBD	Non-Specimen	
1732	Quercus virginiana	Live oak	7.4	13	23	Good	TBD	Non-Specimen	
1733	Quercus virginiana	Live oak	10.5	22	24	Good	TBD	Non-Specimen	
1734	Quercus virginiana	Live oak	8.8	17	20	Good	TBD	Non-Specimen	
1735	Quercus virginiana	Live oak	8	18	25	Good	TBD	Non-Specimen	
1736	Quercus virginiana	Live oak	9.2	23	25	Good	TBD	Non-Specimen	
1737	Phoenix roebelenii	Pygmy date palm	4	3	5	Good	TBD	Non-Specimen	
1738	Sabal palmetto	Cabbage palm	11.1	13	15	Good	TBD	Non-Specimen	Off-Site in FDOT ROW
1739	Ficus aurea	Strangler Fig	5	15	20	Good	TBD	Non-Specimen	Off-Site in FDOT ROW
1740	Sabal palmetto	Cabbage palm	11	12	15	Good	TBD	Non-Specimen	Off-Site in FDOT ROW
1741	Sabal palmetto	Cabbage palm	13	8	18	Good	TBD	Non-Specimen	Off-Site in FDOT ROW
1743	Sabal palmetto	Cabbage palm	10	13	11	Good	TBD	Non-Specimen	Off-Site in FDOT ROW



CALL 811 OR VISIT WWW.SUNSHINE811.COM BEFORE DIGGING.
CALL BEFORE YOU DIG. IT'S THE LAW!

JORGE L. CABRERA

Professional Surveyor & Mapper, # 6487



Prepared for:

Festival Centre, LLC

CHECKED BY: JLC.

DRAWN BY: JF / ELF

FIELD DATE: 04/30/2024

DATE: 05/09/2024

SCALE: 1" = 30'

JOB No. 24-8007

SHEET:

3 OF 3

* ORIGINAL SURVEY DONE UNDER JN 18-4716 ON DECEMBER 6th, 2018

This drawing is the property of Jorge L. Cabrera Professional Surveyor & Mapper. Reproductions of this drawing are not valid unless Signed and embossed with the surveyor's seal.